

<b>CORPORATE OFFICE</b> MATTHEWS, NC	<b>CANADA OFFICE</b> CONCORD, ON
<b>PHONE</b> (704) 841-6000	<b>PHONE</b> (905) 761-6161
<b>FAX</b> (704) 841-6020	<b>FAX</b> (905) 761-6666

**REGIONAL MANAGEMENT LIST**  
APOLLOVALVES/RMLIST



INDPRODUCTS 05/19 500

industrial.apollovalves.com  
customer service (704) 841-6000



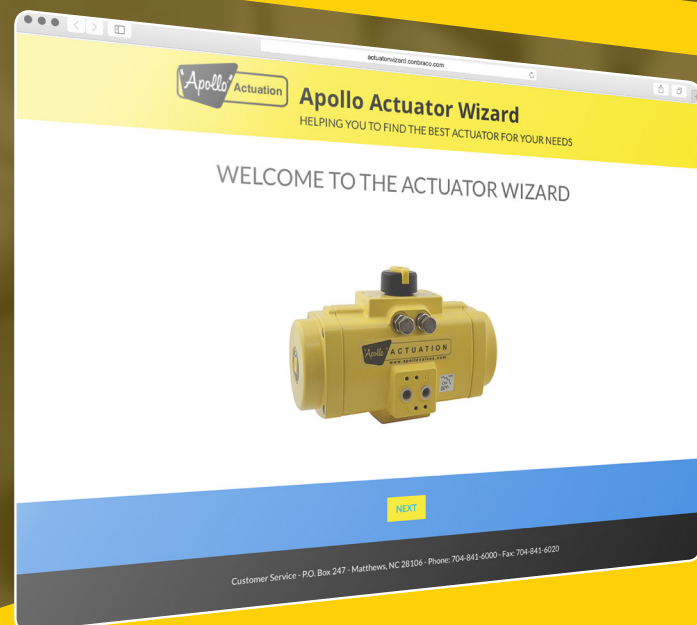
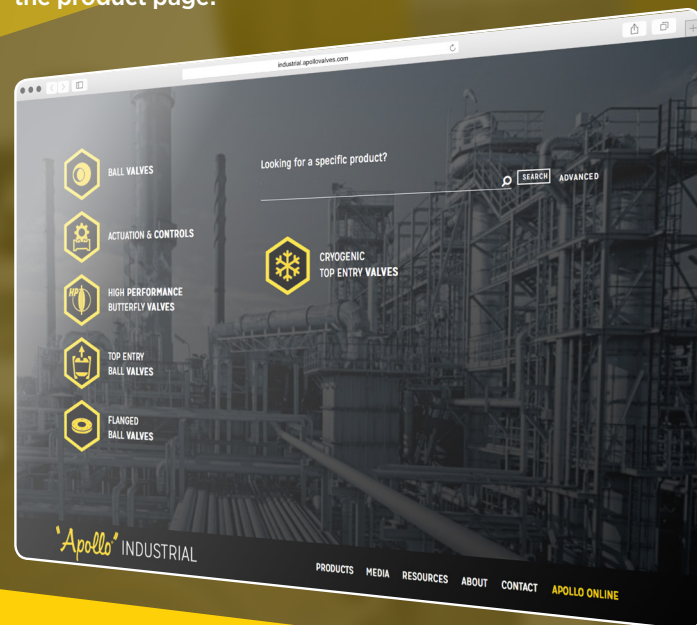


# THE APOLLO INDUSTRIAL WEBSITE

industrial.apollovalves.com

Easily find products by type or series number or filter products by style, type, end connection, material, size, pressure, approvals or design.

Quickly view tech sheets and maintenance manuals right from the product page!



# ACTUATION WIZARD

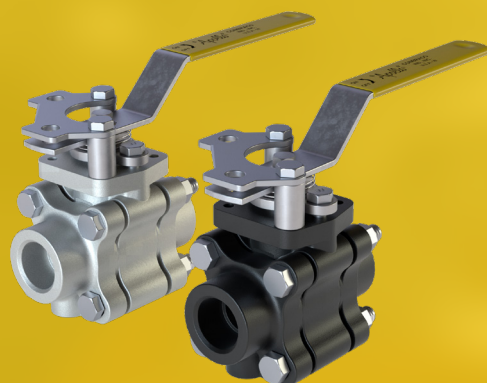
Helping you to find the best actuator assembly for your needs based on valve type, media conditions and actuator requirements.  
actuatorwizard.apollovalves.com

# INDUSTRIAL CORE PRODUCTS

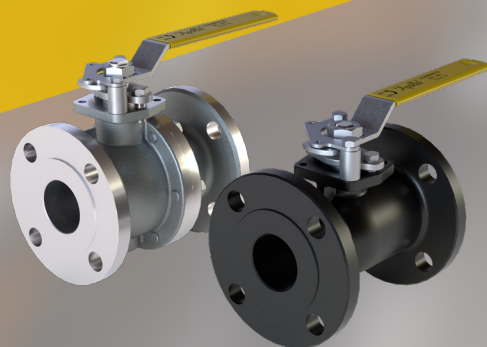
## 2-PIECE BALL VALVES



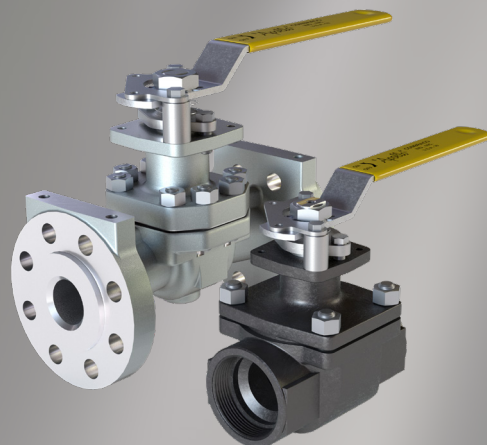
## 3-PIECE BALL VALVES



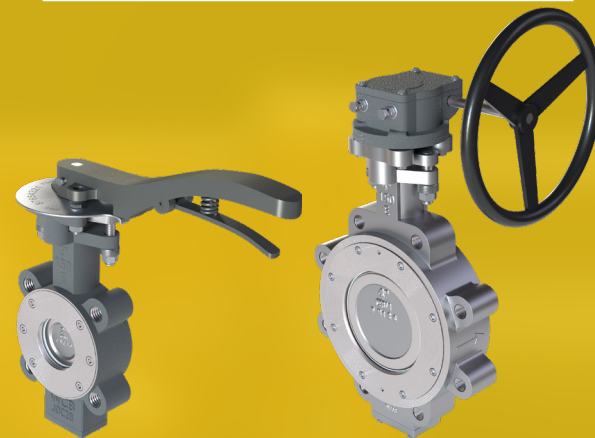
## FLANGED VALVES



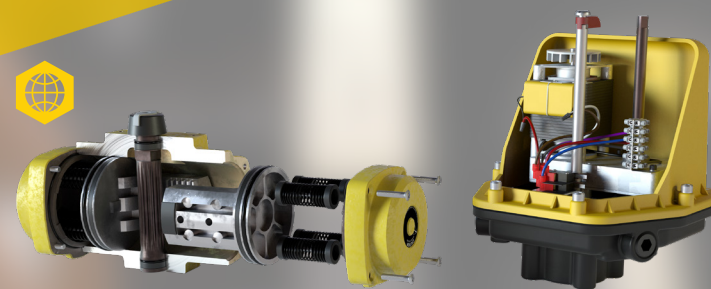
## TOP ENTRY BALL VALVES



## HIGH PERFORMANCE BUTTERFLY VALVES



## ACTUATION



## SAFETY RELIEF VALVES



denotes Apollo International™ products

# THE APOLLO ADVANTAGE

- American Manufacturing and Steel Production\*
- Competitive Delivery Times
- Factory Responsiveness
- High Quality Material Made From Certified Ingot
- High Alloy Materials Readily Available
- 5-Year Warranty\*
- Same Top-Works Design for 3-Piece, Flanged, and Top Entry Valves
- Made in America & “Buy American Act” Compliant\*

\*Does not apply to Apollo International™ products.



WCB CARBON STEEL  
LCC CARBON STEEL  
CF8M STAINLESS STEEL  
CF3M STAINLESS STEEL  
ALLOY 20  
DUPLEX | SUPER DUPLEX  
HASTELLOY®  
NICKEL  
MONEL®  
BRONZE | LEAD FREE  
BRONZE  
85-5-5-5 BRONZE

AVAILABLE  
**ALLOYS**